

Slab  
Paint Tray

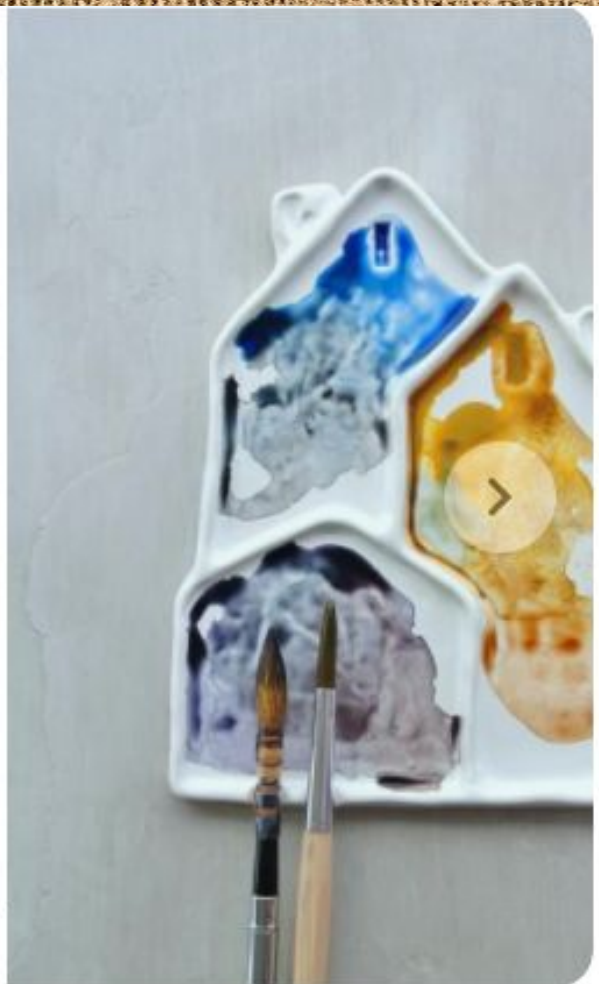
# Purpose

- ❖ **INTRO TO CLAY TERMS & SKILLS**
- ❖ **INTRO TO FUNCTIONAL SLAB  
CONSTRUCTION**
- ❖ **INTRO TO GLAZING**







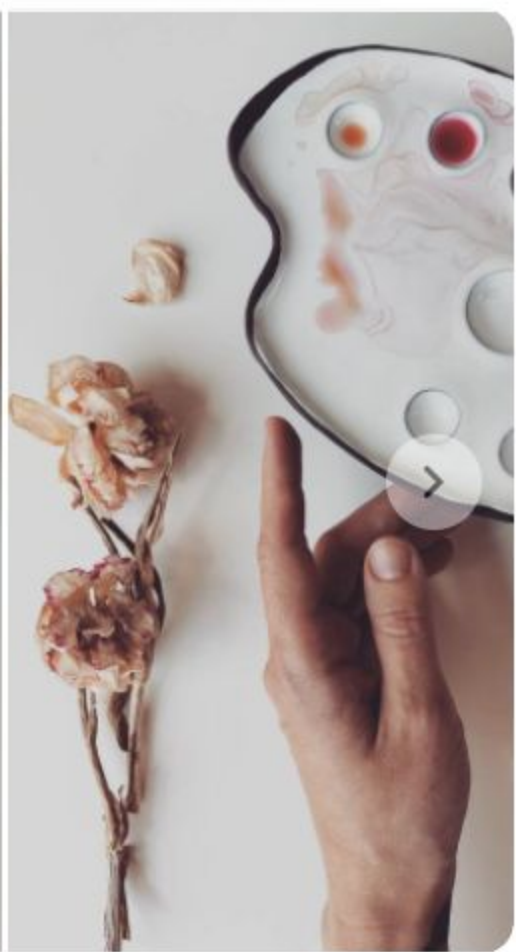














<https://www.artfulhome.com/artist/Jennifer-Falter/8040>

# Steps



**RESEARCH & DESIGN**



**CREATE, DRY & CARVE TO DECORATE**



**FIRE**



**GLAZE**

## Ceramics Words to Know >>

- ❖ **Bisque** - Clay that has been heated to over 1800 degrees F. in a kiln. Firing transforms the grey fragile greenware into strong durable ceramic ware suitable for decorating.
- ❖ **Coil Construction** - A construction technique in which clay "snakes" are used to build ware.
- ❖ **Glazing** - Applying liquid glazes to the ceramic pieces. Glazes are made from finely ground glass suspended in a liquid. In the presence of heat, the glaze becomes a glassy coating which fuses to the surface.

## Ceramics Words to Know >>

- ❖ **Glaze Firing** - Firing done after glaze has been applied to bisque or (occasionally) greenware to produce a glass-like surface.
- ❖ **Greenware** - Raw, dry, unfired clay. Characterized by being very fragile.
- ❖ **Pinch Construction** - A construction technique in which the clay is pinched and manipulated with the fingers into the desired shape.
- ❖ **Scoring** - To join two pieces of clay, it is usually necessary to prepare the surfaces of each piece to create a strong bond where they meet. Generally this is done by making regular incisions with a pointed or serrated tool, a needle or fork across the joining area.

## Ceramics Words to Know >>

- ❖ **Sgraffito** - A decorative technique in which a design is scratched through one or more layers of slip, stain or underglaze, producing patterns from contrast between the underglaze and white clay.
- ❖ **Slab Construction** - A construction technique in which clay is rolled into thin sheets and manipulated into shapes.
- ❖ **Slip** - Suspension of clay in water, used as a "glue" or for decorating.
- ❖ **Wedging** - The process by which air pockets are forced out of the clay and the clay is mixed. It involves a kneading motion combined with a rotation.

